

Stamp:

THOMASTON, GA BRANCH
 JONESBORO, GA STAKE
 HWY. 36 nr ROCK HILL SCHOOL ROAD
 THOMASTON, GA. 30286

Project for:
 THE CHURCH OF
JESUS CHRIST
 OF LATTER-DAY SAINTS

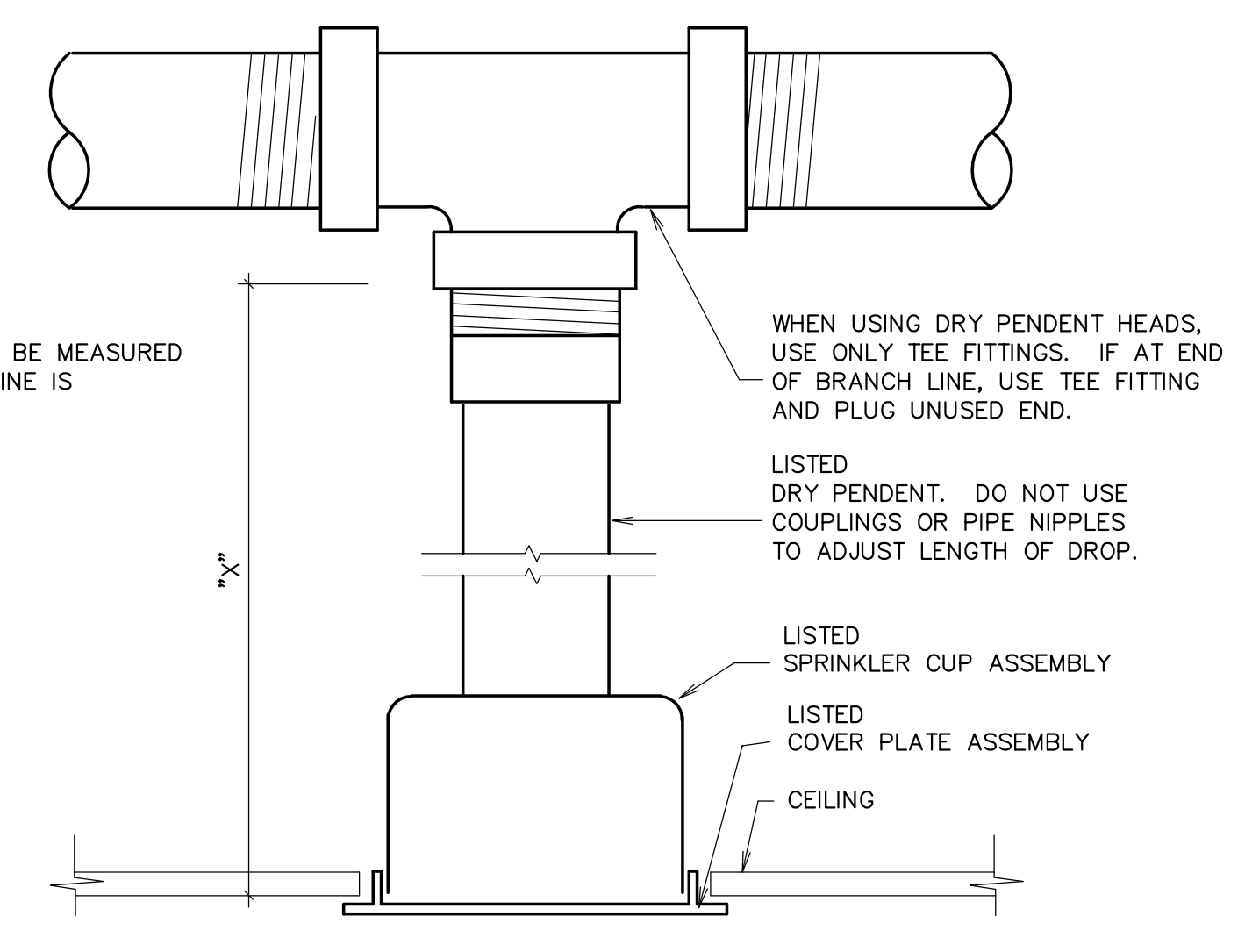
Mark	Date (dd-mm-yy)	Description
16	MAR-09	FINAL
07	JAN-08	90% REVIEW

Architect Project Number:
 0805
 Plan Series:
 FAY-170-02-[07]-02
 Project Number:
 500-0881-08020101

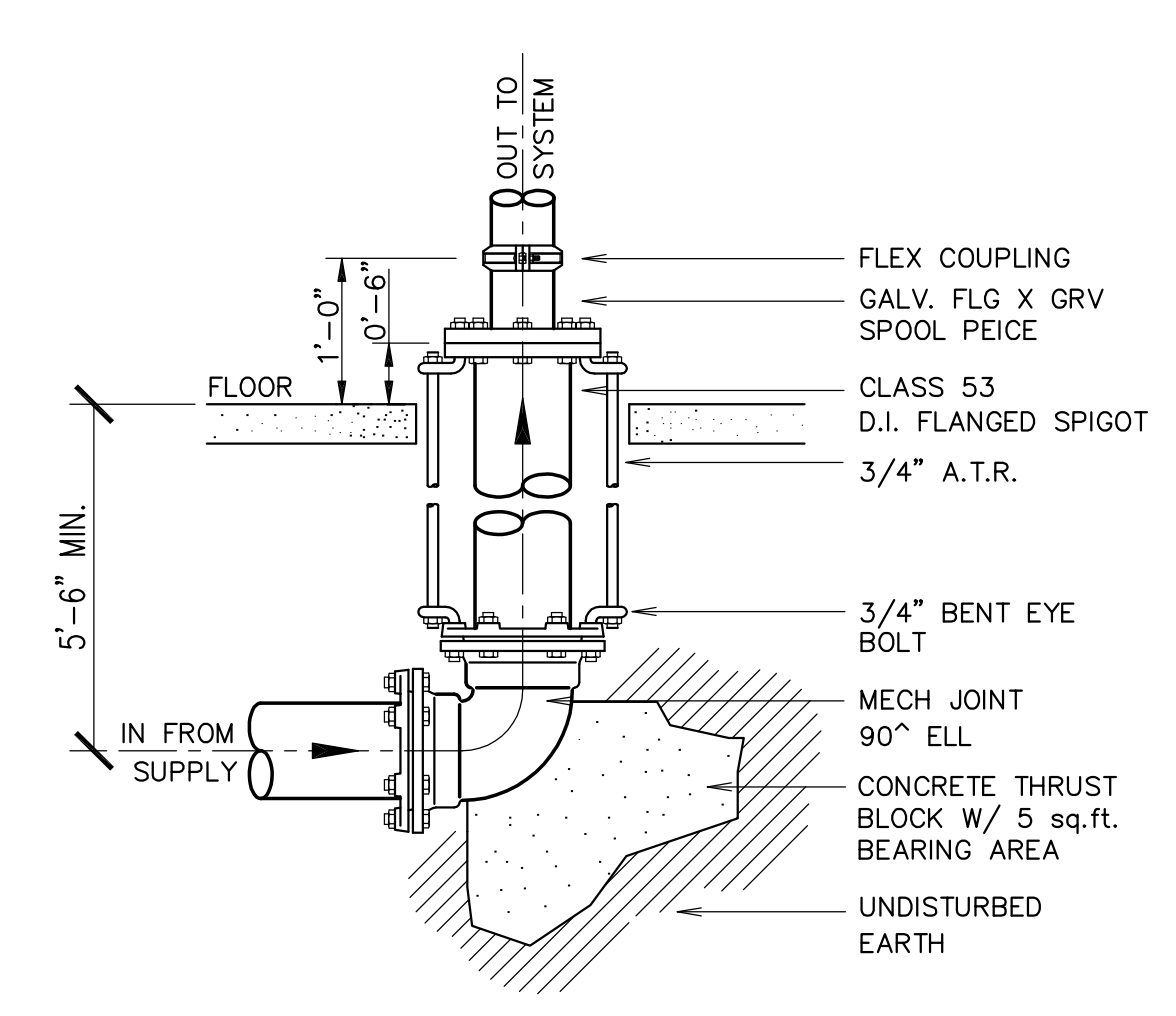
Sheet Title:
**FIRE
 SPRINKLER
 RISER AND
 DETAILS**

Sheet:
FS501
 Of 5

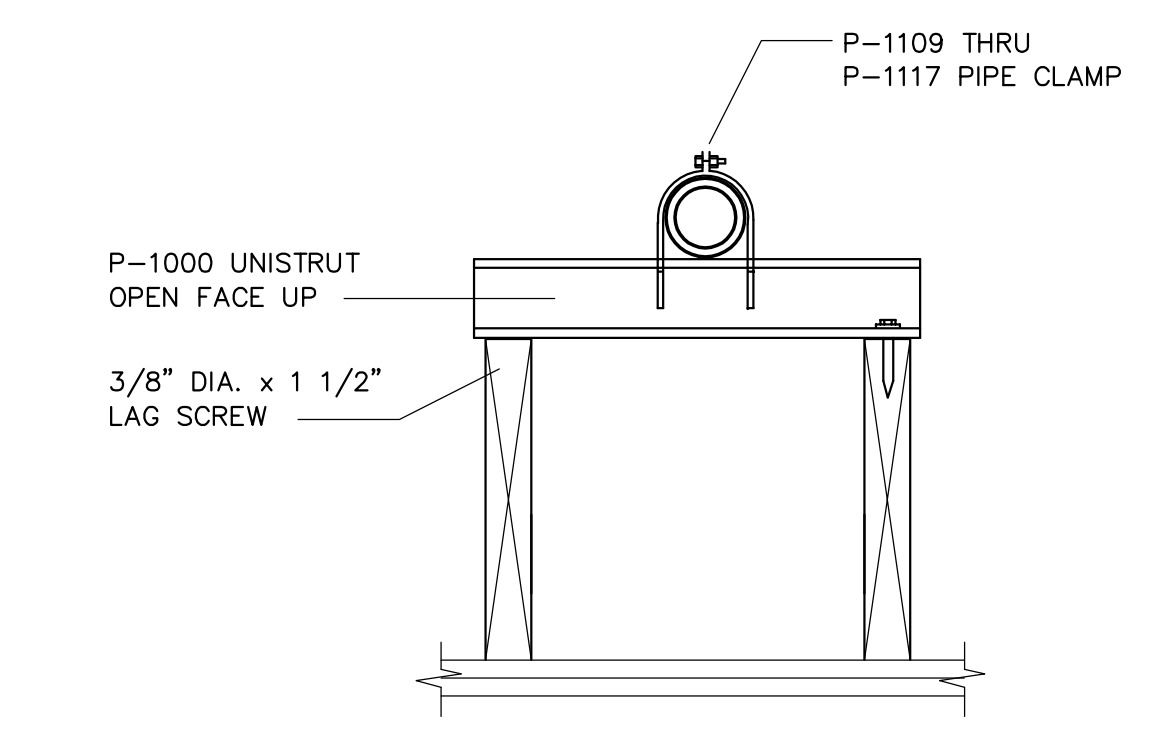
Date: MAR. 16, 2009



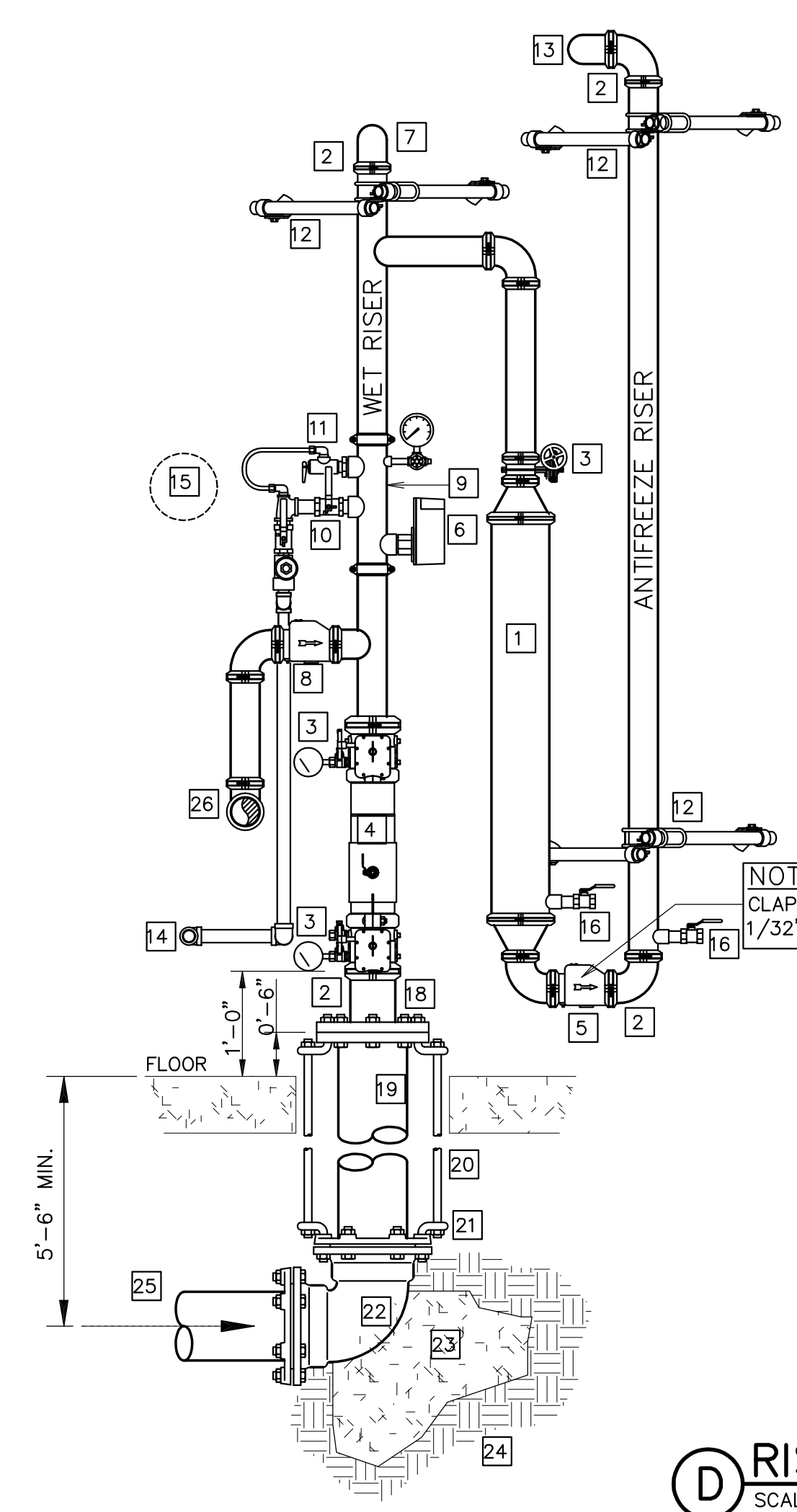
A DRY PENDENT HEAD DETAIL
 SCALE: NONE



B UNGROUND ELL
 SCALE: NONE



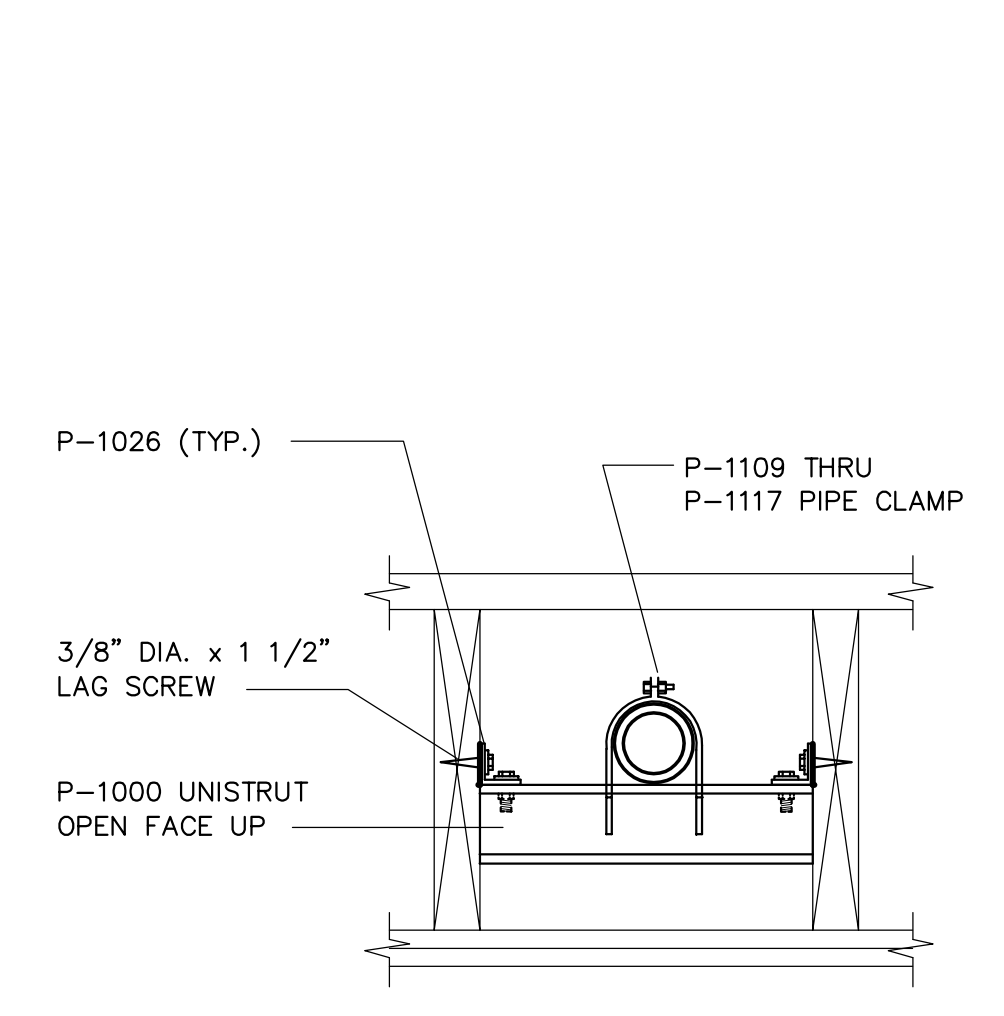
C PIPE HANGER
 SCALE: NONE



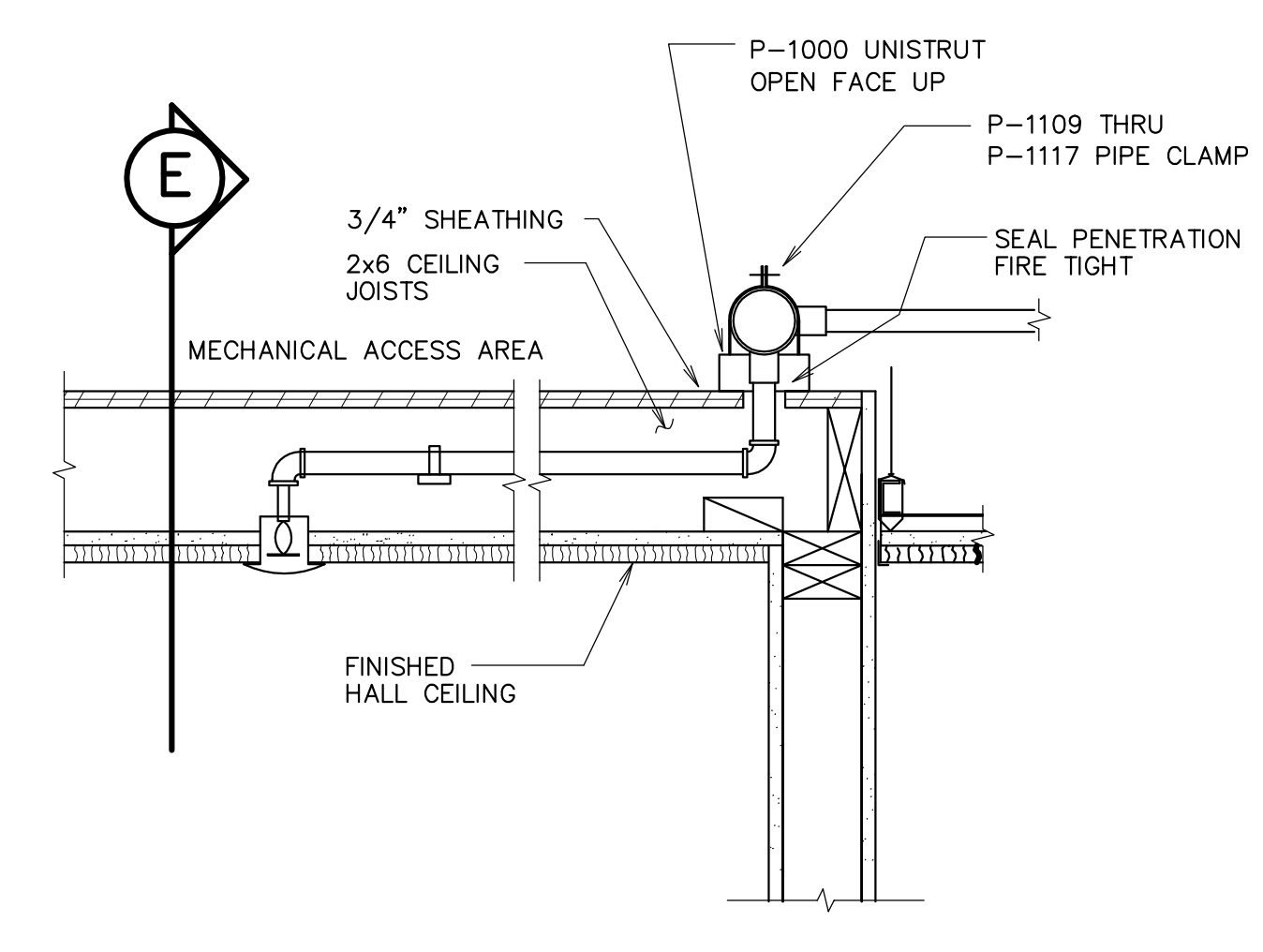
- # RISER SCHEMATIC NOTES**
1. INCREASE LENGTH OR SIZE OF DROP PIPE TO ACCOMMODATE ANTIFREEZE EXPANSION AS NEEDED - ASSUME A 5% MINIMUM SOLUTION EXPANSION.
 2. USE FLEXIBLE GROOVED PIPE COUPLING ONLY IF SEISMIC BRACING IS REQUIRED.
 3. GROOVED BUTTERFLY VALVE WITH INTEGRAL SUPERVISORY SWITCH.
 4. DOUBLE CHECK BACKFLOW PREVENTER WITH RELATED TRIM AND GAUGES.
 5. SWING CHECK VALVE WITH 1/32" HOLE IN CLAPPER.
 6. VANE TYPE WATER FLOW SWITCH.
 7. SUPPLY TO WET PIPE FIRE SPRINKLER SYSTEM.
 8. SWING CHECK VALVE.
 9. RISER MANIFOLD - INCLUDES PRESURE GAUGE, FLOW SWITCH, PRESSURE RELIEF VALVE, AND TEST AND MAIN DRAIN DEVICE.
 10. TEST & MAIN DRAIN DEVICE - PIPE TO OUTSIDE WITH GALV SCH 40 PIPING.
 11. PRESSURE RELIEF VALVE SHALL BE REQUIRED SET AT 175 PSI. - PIPED TO DISCHARGE OUTSIDE.
 12. INSTALL 4-WAY EARTHQUAKE BRACE ONLY IF SEISMIC BRACING IS REQUIRED.
 13. SUPPLY TO PIPING IN COLD SPACE SPRINKLERS.
 14. PIPE TO DRAIN OUTSIDE.
 15. WEATHERPROOF ELECTRIC HORN AND STROBE (OUTSIDE).
 16. AUXILIARY DRAIN/INJECTION PORTS- PLUGGED OUTLET PROVIDED.
 17. WIRING FOR ELECTRIC ALARM - BY OTHERS TO FIRE ALARM.
 18. GALVANIZED FLANGE AND SPOOL PIECE CLASS 53 D.I. FLANGED SPIGOT.
 19. 3/4" A.T.R.
 20. 3/4" BENT EYE BOLT.
 21. MECHANICAL JOINT 90° ELL.
 22. CONCRETE THRUST BLOCK WITH 5 SQ. FEET BEARING AREA.
 23. UNDISTURBED EARTH.
 24. IN FROM SUPPLY.
 25. OUT TO FIRE DEPARTMENT CONNECTION WITH GALVANIZED SCH 40 PIPING- PROVIDE BALL DRIP WHEN TRAPPING PIPE. SIZE CONNECTION AS REQUIRED.
 26. NOTE: CLAPPER MUST HAVE 1/32" DIA. HOLE.

NOTE:
 PROVIDE SLEEVES OR CORE DRILL WHERE PIPING PENETRATES BUILDING AT FLOOR AND WALLS. SEAL AROUND PENETRATION WITH FLEXIBLE MASTIC AT FLOOR. PROVIDE 2" ANNULAR SPACE AROUND AND RESTRAIN FLANGE SPIGOT.

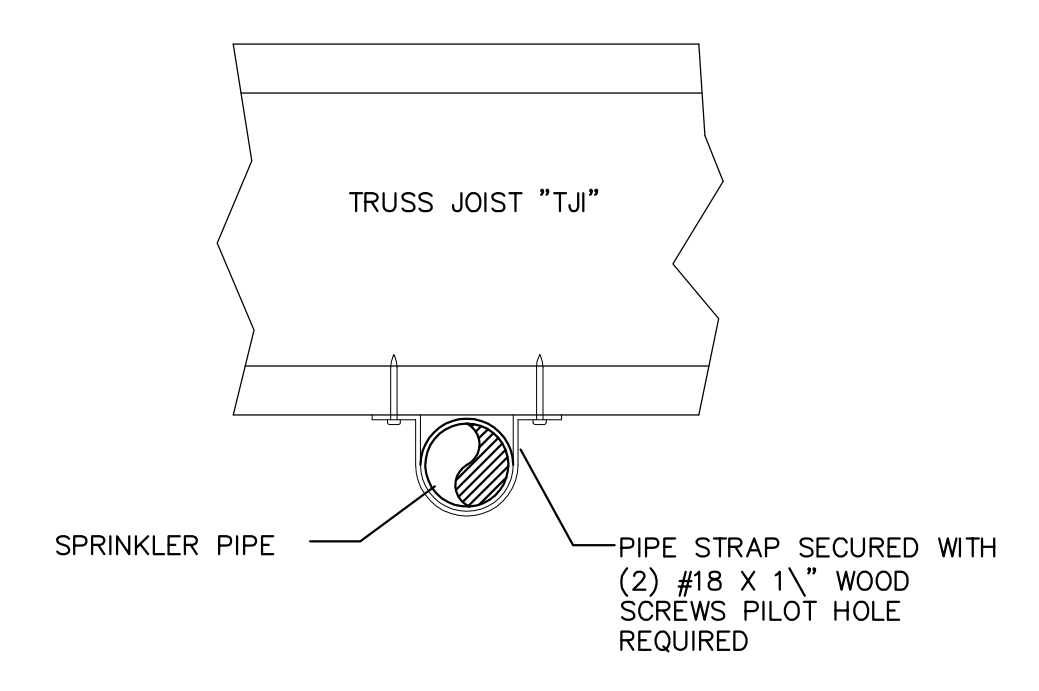
D RISER SCHEMATIC
 SCALE: NONE



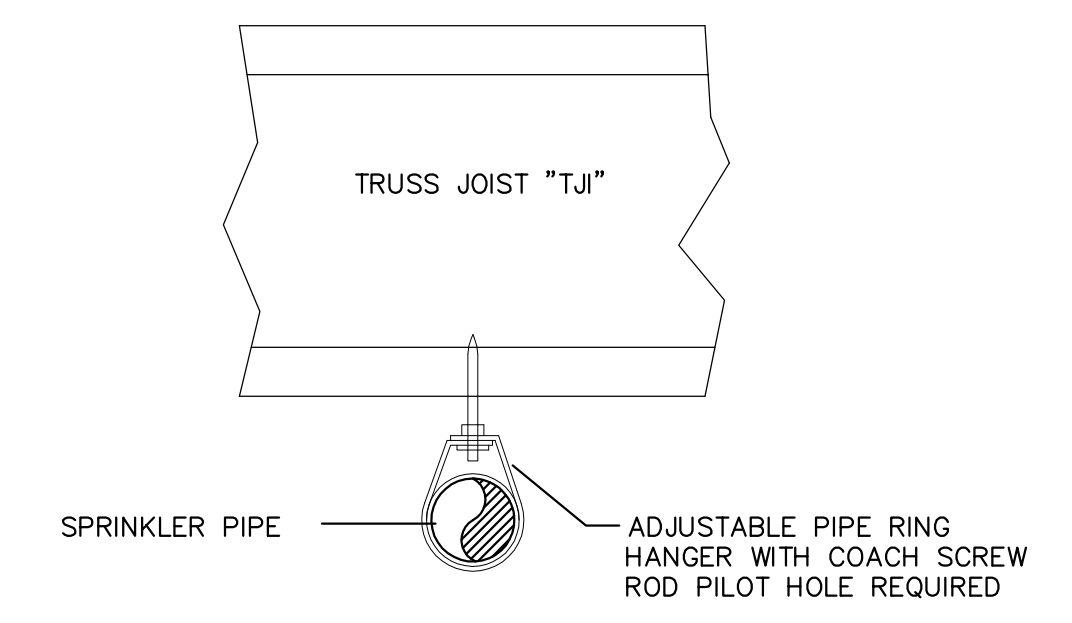
E SECTION
 SCALE: NONE



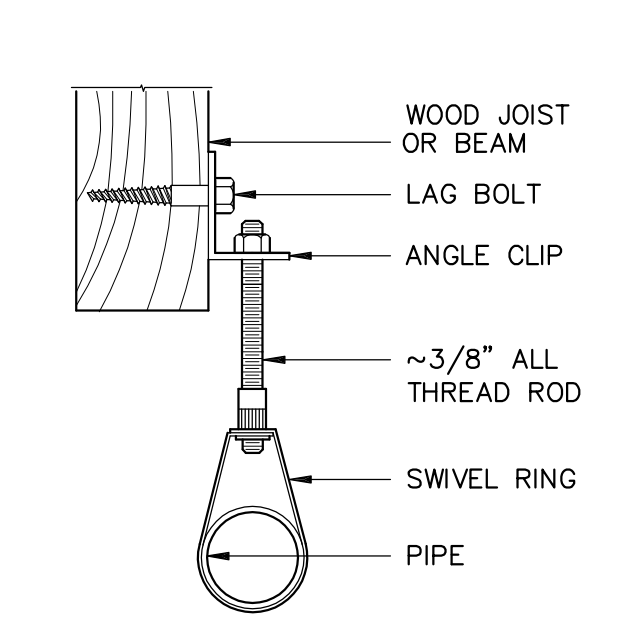
F DETAIL
 SCALE: NONE



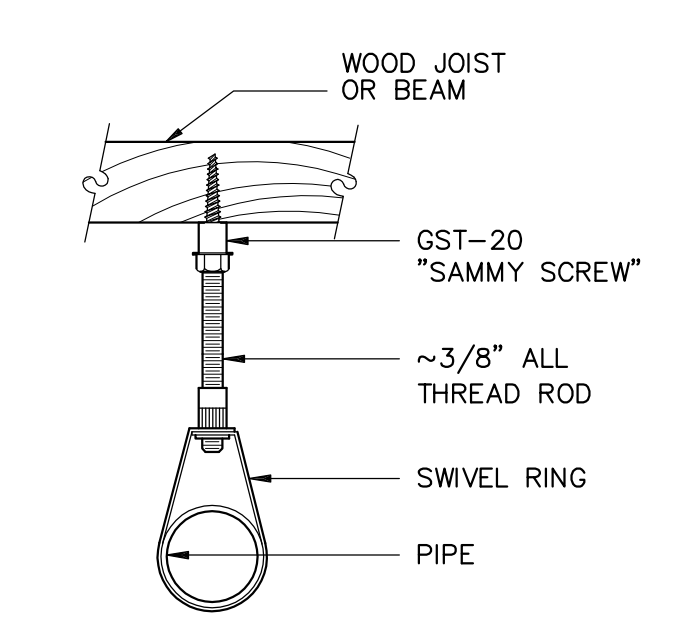
G PIPE HANGER
 SCALE: NONE



H PIPE HANGER
 SCALE: NONE



J PIPE HANGER
 SCALE: NONE



K PIPE HANGER
 SCALE: NONE