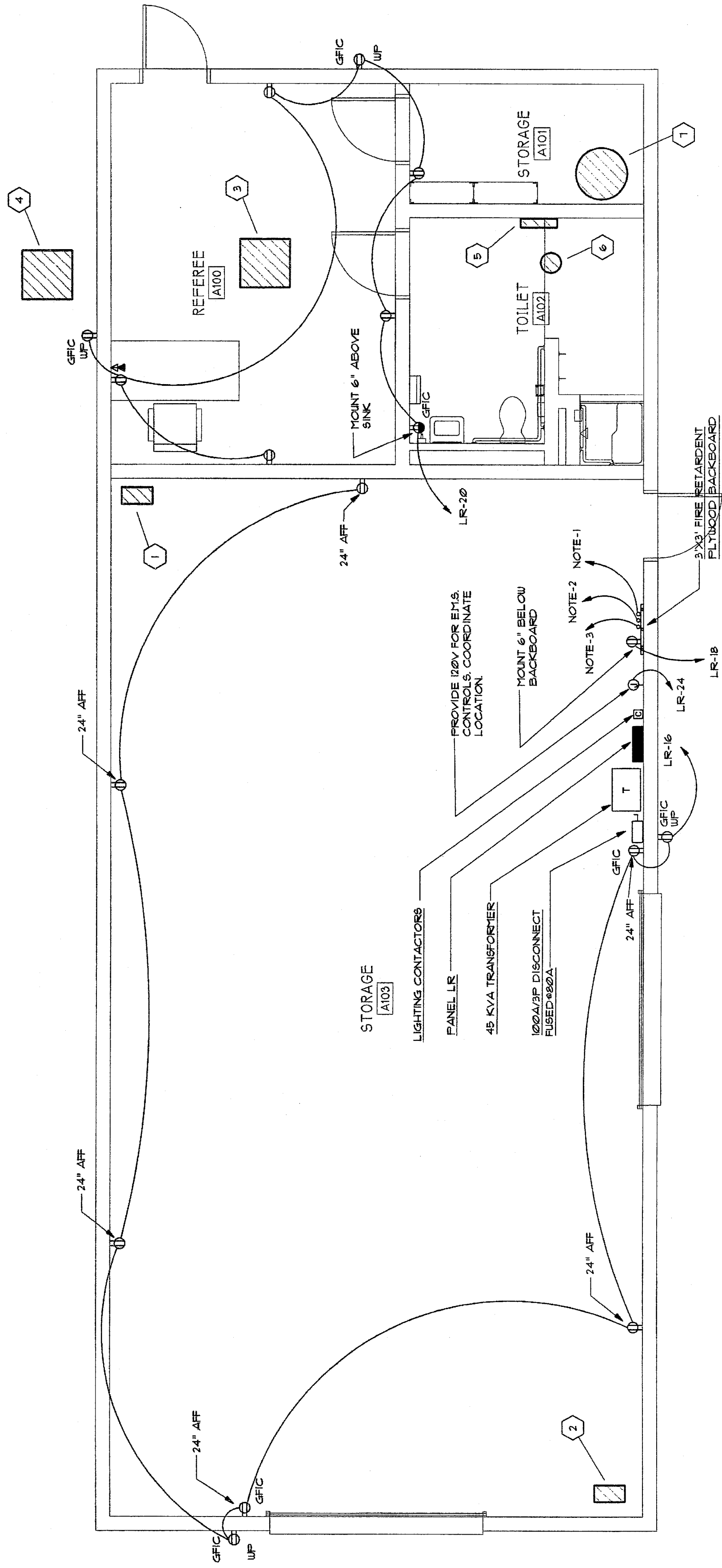


**ROBERTS ENGINEERS**  
CONSULTING ENGINEERS  
40 EAST PACIFIC ROAD, NE  
ATLANTA, GEORGIA 30305  
PHONE 404 521 4100  
FAX 404 521 4101



1 FLOOR PLAN - POWER  
SCALE: 1/4"=1'-0"

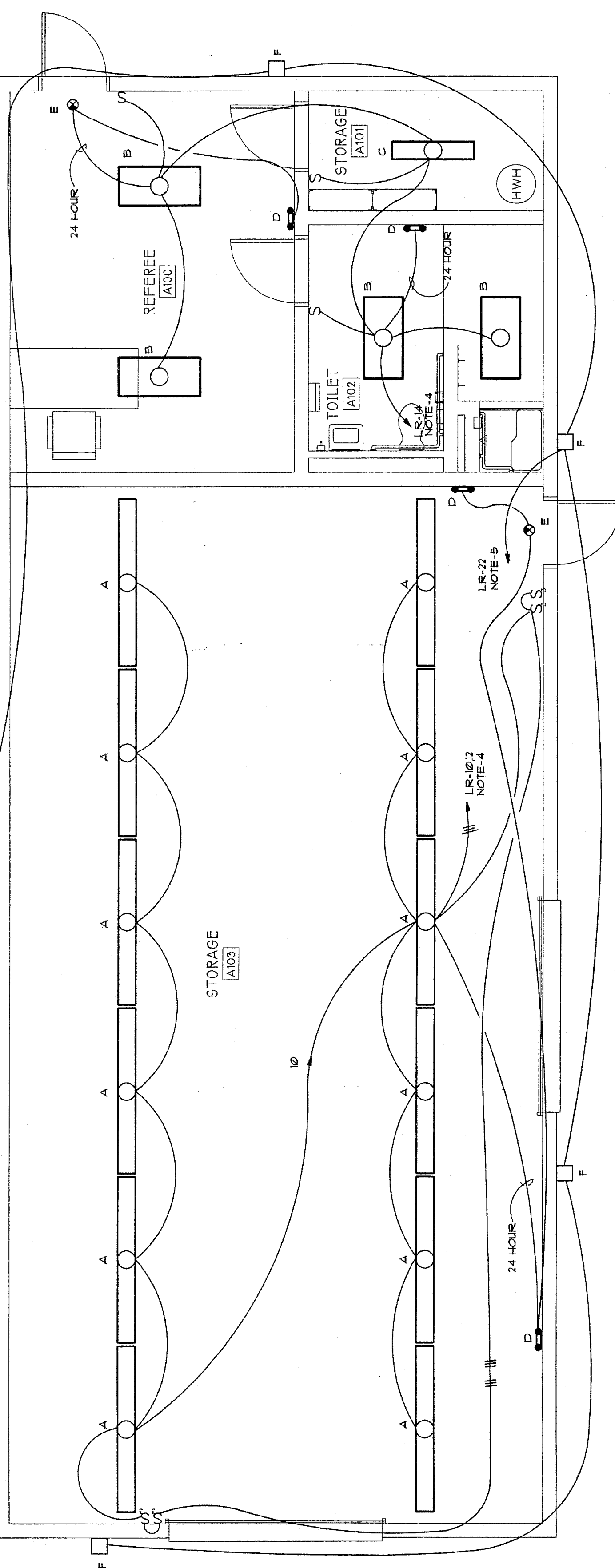
**ELECTRICAL NOTES**

1. INSTALL GROUND BUS ON BACKBOARD. EXTEND TO GND-1/2" AND CONNECT TO GROUND BAR OF PANEL LR.
2. EXTEND 1/2" MFC TO EQUIPMENT BACKBOARD IN TICKET BUILDING. COORDINATE CONDUIT ROUTING WITH ARCHITECT.
3. EXTEND 1/2" TO PRESS BOX.
4. ROUTE CIRCUIT THROUGH EXTERIOR LIGHTING CONTRACTOR.
5. ROUTE CIRCUIT THROUGH EXTERIOR LIGHTING CONTRACTOR.

**SYMBOL LEGEND**

- ⊕ DUPLEX RECEPTACLE
- ⊕ DUPLEX RECEPTACLE ABOVE COUNTER
- ⊕ QUADRUPEX RECEPTACLE
- ⊕ COMMUNICATION OUTLET
- S SPST LIGHT SWITCH
- S 3-WAY LIGHT SWITCH
- GFC GROUND FAULT RECEPTACLE
- UP WEATHER PROOF
- 2'x4' FLUORESCENT LIGHT FIXTURE
- 1'x4' FLUORESCENT LIGHT FIXTURE
- ⊕ BATTERY OPERATED EMERGENCY LIGHT FIXTURE
- ⊕ BATTERY OPERATED EXIT SIGN

**ELECTRICAL RISER DIAGRAM**  
E-2 NOT TO SCALE



2 FLOOR PLAN - LIGHTING  
SCALE: 1/4"=1'-0"

**LIGHTING FIXTURE SCHEDULE**

NOTE: ALL ELECTRICAL SPECIFICATIONS FOR ADDITIONAL REQUIREMENTS WHICH MAY NOT NECESSARILY BE REFLECTED IN CATALOG NUMBER AND/OR DESCRIPTION IN THIS SCHEDULE.

MARK	DESCRIPTION	VOLT	LAYERS	REMARKS
A	LITHONIA * D11 236718 AR20 GEB	120	2#P2078	
B	LITHONIA * D11 332 RU AR302 GEB	120	3#P3278	
C	LITHONIA * D11 332 AR20 GEB	120	2#P3278	
D	LITHONIA * ELH	120	FURNISHED	
E	LITHONIA * LOR54R 100 ELN	120	FURNISHED	
F	LITHONIA * TUA 5001-102-D7B	120	1#5001 TH	COORDINATE MOUNTING HEIGHT WITH ARCHITECT

**NEW PANELBOARD "LR" SCHEDULE**

VOLTAGE: 120/208V 3 PHASE, 4 WIRE  
BUS SIZE: 2000A  
MANS: 150 MAIN BREAKER  
TOTAL LOAD: 271 KVA  
LOADING SURFACE  
FAULT DUTY: 10,000 AIC

NO	SERVES	MOUNTING SURFACE												REMARKS				
		LTG	RCPT	MTR	AC	HTG	MISC	TRIP	AC	HTG	AC	HTG	AC					
1	BEH-1																	
2	BEH-1																	
3	BEH-1																	
4	BEH-1																	
5	BEH-1																	
6	BEH-1																	
7	BEH-1																	
8	BEH-1																	
9	BEH-1																	
10	BEH-1																	
11	BEH-1																	
12	BEH-1																	
13	BEH-1																	
14	BEH-1																	
15	BEH-1																	
16	BEH-1																	
17	BEH-1																	
18	BEH-1																	
19	BEH-1																	
20	BEH-1																	
21	SPACE																	
22	SPACE																	
23	SPACE																	
24	SPACE																	
25	SPACE																	
26	SPACE																	
27	SPACE																	
28	SPACE																	
29	SPACE																	
30	SPACE																	
31	SPACE																	
32	SPACE																	
33	SPACE																	
34	SPACE																	
35	SPACE																	
36	SPACE																	
37	SPACE																	
38	SPACE																	
39	SPACE																	
40	SPACE																	
41	SPACE																	
42	SPACE																	

**MECHANICAL EQUIPMENT ELECTRICAL CONNECTION SCHEDULE**

ITEM NO.	DESCRIPTION	EQUIPMENT CHARACTERISTICS				CIRCUIT	FEEDER	DISCONNECT SWITCH	REMARKS
		VOLTS	PH	KW	HP				
1	BEH-1	208	3	9.0	--	LR-13/5 20A/3P GND-1/2"	3/0 3 NF	--	
2	BEH-2	208	3	9.0	--	LR-13/5 20A/3P GND-1/2"	3/0 3 NF	--	
3	AC-1	208	1	--	--	LR-2/4 30A/1P GND-1/2"	3/0 2 NF	--	
4	HP-1	208	1	--	--	LR-6/9 20A/3P GND-1/2"	3/0 2 NF	UP	
5	BEH	208	1	3.0	--	LR-13/5 20A/3P GND-1/2"	3/0 2 NF	--	
6	F-1	120	1	--	1/6	LIGHT CIRCUIT GND-1/2"	2/0 1 NF	NOTOR RATED	
7	WATER HEATER	208	1	4.5	--	LR-11/9 30A/3P GND-1/2"	3/0 2 NF	--	
8	AC-2	208	1	6.0	1/3	PRESS BOX 40A/3P UP GND-3/4"	4/0 2 NF	--	
9	HP-2	208	1	--	--	3/0 2 NF	3/0 2 NF	UP	